



Ready, set, charge!
5 questions to
drive the change to
electric vehicles



The road to electrification starts here

The race for electric vehicle (EV) adoption is on. EV sales doubled globally in 2021 to a new record of 6.6 million, while nearly 10% of the global fleet of vehicles is made up of EVs.*

Regulations are key to driving this change. The European Union has voted to ban the sale of any new vehicles with internal combustion engines (ICEs) by 2035. That means you have just over 10 years to electrify your fleet.

The question isn't if you'll electrify, it's when. But don't worry—we've got you covered. Here are five questions you should ask yourself on your journey to electrification.

Timeline of CO2 emission regulations in Europe

Hamburg:

Restricted access to trucks and LCVs that don't meet the Euro 6 emissions standard

2018

Amsterdam:

Trucks and LCVs to be emissions-free

2025

London:

All vehicles to be emissions-free

2040

2020

London:

Restricted access to trucks and LCVs in low-emission zones

2030

Amsterdam:

All vehicles to be emissions-free

2050

Hamburg:

Climate neutral

Paris:

Carbon neutral

*Source: Global EV Outlook 2022, The International Energy Agency (IEA)



1

What's the first step I can take to decarbonise my fleet?

Fleet electrification is a complex process that takes time and careful planning. If you're not yet ready to switch to EVs, there's still a lot you can do to improve how you use your ICE vehicles.

A good telematics system will help you reduce your fleet's carbon emissions. For example, route optimisation software considers factors such as distance, traffic patterns to define the ideal path. The result? Less time on the road, less fuel consumed and lower emissions.

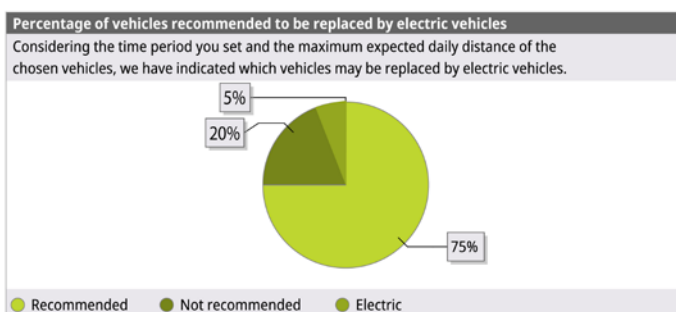
You can also use telematics to give drivers direct feedback and predictive driving advice to help them adopt a responsible driving style. Doing so will support them to reduce fuel and maintenance costs, be safer and drive greener.

You might be ready to switch without even knowing it

Want to add EVs to your fleet? An EV feasibility assessment will help.

Our Fleet Electrification Report evaluates your fleet and identifies vehicles that could be replaced with an electric model.

You'll also see how much fuel and CO₂ you'll save.





2 What should I include in my business case to get the support I need?

Keep your company goals in mind and include the following benefits:

Financial

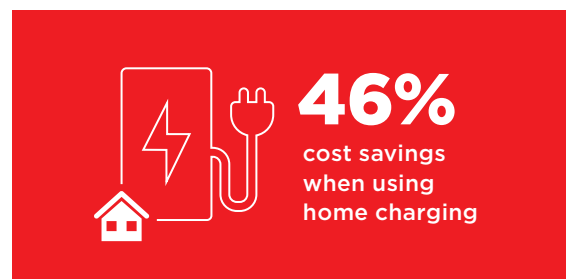
EVs bring significant savings in everyday running costs such as maintenance and energy. Calculate your total cost of ownership and show how much you can save compared to your ICE fleet. Consider driving distances, fuel consumption, maintenance costs, charging costs, vehicle taxes and insurance. Don't forget any financial incentives from the government.

Other

Calculate your CO2 savings and show how switching to EVs will help you meet carbon emissions regulations. You should also note the benefits relating to safety, company reputation, employer branding and meeting customer expectations.

Curious about how much you could save with EVs?

Here are the estimated cost savings when using battery EVs instead of diesel vehicles:



Source: Webfleet internal calculations based on 100km run/month and running costs of € 0.46/kWh for street charging, €0.30/kWh for home charging and €2/L for diesel



3

What are my charging options?

Charging infrastructure is a key consideration when you have an electric fleet. Knowing where and when to charge will help you tackle range anxiety and ensure EV drivers have enough power to complete trips.

Private charging

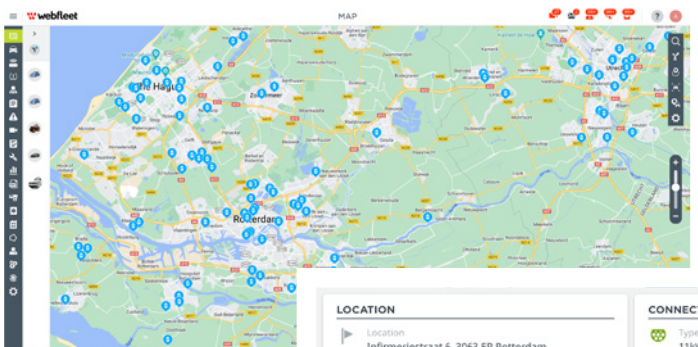
You can install private charging stations for your drivers, whether they're at home or work. There are many financial incentives to help offset your initial investment. Do your research and find out what's available in your region.

Public charging

Public charging points can be limited. The good news? They're expanding significantly. The International Energy Agency showed that publicly available EV charging points went up by nearly 40% in 2021.

Our tips to find and access public charging points

- Use the Webfleet map to see 500,000+ public charging points worldwide, with details like availability and plug type.
- Find a company that gives access to charging stations from different providers.
- Consider an EV roaming plan to guarantee access to charging points across regions or countries.



LOCATION	CONNECTORS
<p>Location Infirmeriestraat 6, 3063 EP Rotterdam</p> <p>Coordinates 51° 55' 18.4" N, 4° 30' 8.64" E</p>	<p>Type 2 outlet 11kW/AC3</p> <p>Status 4 of 10 available 4 of 10 occupied 2 of 10 out of service</p>
OPENING HOURS	
<p>Phone +31 88 775 5450</p> <p>Opening hours 24/7</p>	



4 If I have a mixed fleet with both ICE and electric vehicles, what's the best way to plan their routes?

Cities across Europe are introducing low-emission and zero-emission zones to reduce air pollution and traffic congestion. Non-compliant vehicles that enter these zones could incur a fee or risk a fine. Orders with routes along restricted zones should be allocated to EVs.

With a fleet management solution, identify restricted emission zones on your navigation map with geofencing for ICE vehicles that don't meet the emissions standards. You can then track vehicle movements and get alerts if a vehicle enters a restricted zone. If a non-compliant ICE consistently crosses into these zones, it may indicate that you should replace it with an electric model.

Low-emission and zero-emission zones

250+

There are more than 250 Low Emission Zones (LEZ) in the European Union.

50

Around 50 cities in the world have plans to implement or already have Zero Emission Zones (ZEZ).



5

How can Webfleet help me?

Webfleet gives you everything you need to control and organise your whole fleet, with ICE, hybrid and electric vehicles all on the same interface. It also has features that will help you optimise the way you use your EVs. You'll be able to:

- Monitor your whole fleet in one view
- Use OptiDrive to improve your team's driving style to EVs
- See real-time charging information
- Plan your jobs based on EV battery levels and remaining driving ranges
- Get battery alerts and adapt quickly
- Identify on map the energy consumption performance of your fleet
- Find EV charging points across 50+ countries on the Webfleet map

WEBFLEET EV FLEET MANAGEMENT

Here's what you need to access our EV features:



Webfleet

Access all your key vehicle data in one place.



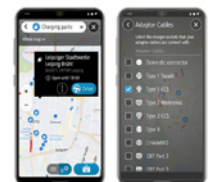
Tracking devices

LINK 245: plug-and-play self-installed tracking.
LINK 740: an advanced fixed installation option.



PRO 8475 Driver Terminal

A tough and versatile tablet that connects your workforce and business.



Work App mobile app

Help drivers find EV charging points and complete their daily tasks.



**Find out more
about what
Webfleet
EV fleet
management
can do for you:**

